

Manage SC//HyperCore clusters at scale with SC//Fleet Manager.

Simplicity is engineered into everything we do.

Scale Computing Fleet Manager is the first cloud-hosted monitoring and management tool built for hyperconverged edge computing infrastructure at scale. It's now easier than ever to securely monitor and manage your entire fleet of clusters running Scale Computing HyperCore. For IT Managers with multiple clusters, maintenance time will be reduced by 50% or more with the simplicity designed into this industry-leading platform.

Simple

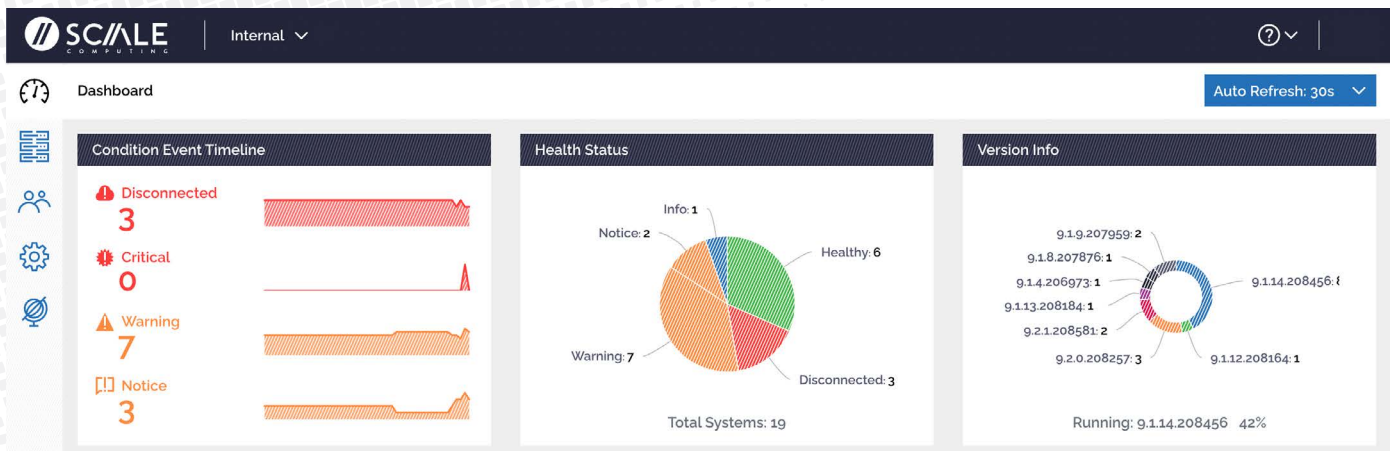
Create ad hoc views of infrastructure diagnostics sorted the way you want to see them with intuitive search and sort capabilities, making it easy to find the details you're looking for within your entire infrastructure.

Scalable

Consider managing infrastructure at scale solved. Whether in a data center or at the edge, from 1-50,000 clusters, see it all from a single cloud-hosted application.

Comprehensive

Eliminate the need to log in to individual clusters to get a complete overview of the status of your complete fleet of SC//HyperCore clusters.



HIGHLIGHTS

Real-time Monitoring of Resources and Health

SC//Fleet Manager consolidates real-time conditions and resource utilization for all of your SC//HyperCore clusters. Instead of having to navigate to individual cluster UIs, SC//Fleet Manager gives users the ability to look at every cluster from a single pane of glass.

- Connectivity and Health can be checked with a quick glance from any browser on any device, even mobile
- Drill down into a specific cluster to diagnose and fix any problems
- View CPU and Disk utilization in real-time at the cluster, node, and VM levels.
- Drill down to the HyperCore login of any cluster from within SC//Fleet Manager

Role-based Access Control for Unlimited Users

Invite unlimited users to your SC//Fleet Manager organization, each with a role that ensures the security of your fleet, while promoting visibility.

- Choose from multiple pre-defined user roles, or create your own
- SC//Fleet Manager roles are granted and managed independently of existing SC//HyperCore user roles, ensuring granularity
- Enjoy the convenience and security of Single Sign-On (Microsoft Azure AD and Google SSO currently supported)

Stay Secure with Single-click Firmware Upgrades

Always stay up-to-date with notifications of SC//HyperCore firmware upgrades for your entire fleet of clusters.

- Know the current firmware of all clusters at-a-glance and the details of any available updates for any cluster
- Apply a firmware upgrade to a cluster with a single click from SC//Fleet Manager, no SC//HyperCore login required
- Monitor the real-time status of firmware upgrades for any number of clusters across your fleet from a single pane of glass



Scale Computing Fleet Manager is very simple and intuitive. The menu is simple and clearly labeled, making it easy to find everything without having to drill down several layers into a menu. The update process is as simple as it gets, with all the information for available updates right in the Update tab in the settings menu. Adding and editing users is done with a few keystrokes and a couple of mouse clicks. There isn't anything that I would consider difficult."



Gartner
peerinsights™

Leadership in Edge Computing. With over a decade of IT technology innovation, Scale Computing is the leader in edge computing. Patented technology transforms isolated locations into unified, self-managing micro-data centers for edge computing. When ease of use, manageability, high availability, and cost savings matter, Scale Computing is the ideal infrastructure solution.



CORPORATE HEADQUARTERS

525 S. Meridian Street - 3E // Indianapolis, IN 46225
P. +1 317-856-9959 // scalecomputing.com